



*fruits défendus*

# Change your idols

Be bewitched by ppfff's spellbinding charms

adelaïda



pandora





[www.ppfff.fr](http://www.ppfff.fr)

THE ABSOLUTE BEST OF  
A CENTURY OF KNOWLEDGE  
AND R&D, TRIED-AND-TESTED,  
REINTERPRETED, OPTIMIZED.

*Wide Range-tailored  
primary transducer,  
Neodymium, AlNiCo, or  
electromagnet driver,  
vibration-proof structure  
and construction, extreme  
components: ppfff models  
see the light of day free  
from creative, technical  
and aesthetic limits*

## **ppfff INFUSES LIVING SENSATIONS UNDER THE SKIN**

Groove, sway, dance, laugh, cry, naturally,  
effortlessly, confidently

*ppfff* takes you on a journey into musicians' intimacy,  
their genius, their far-reaching questions, their brilliant  
ideas, hesitations, level-headed assertions, daring touches:  
humankind shares this.

Music is but a harmony of sudden and mellow speed-ups and  
slow-downs, more-or-less tight-turning twists, ephemeral  
schemes, violent contrasts and infinitesimal nuances.

### *ppfff* knows no lies ...

... fashioned from countless hours of listening, every day,  
from a quest for life, in an auditorium transmuted into a  
state-of-the-art lab for creation : a host of encounters,  
hundreds of brands, products, disappointments...

... and, occasionally, a handful of joys confirming that there really  
is a musical reproduction Magnetic North: expressivity.







## adelaida

Charge inspired by "TQWT" line with integrated volume optimisation. 100% original line design.

- Line optimising principle of vibration non-transmission
- Loose assembly of critical components, eliminating any mechanical communication between front and rear wall
- Composite walls
- 7 materials eliminating vibrating frequencies from a single material
- Aluminium base as mechanical referent via hard spots
- Mass transfer via mechanical spot resulting in inertia of front and rear walls
- Unfiltered 8" main driver, performance made possible by realization of very low speaker tolerances
- Main transducer made in Germany, voice coils with small diameter and light moving system, very open cast, neodymium magnet, originally conceived as wide-range optimised for specifications
- Unusual compression tweeter, optimised by ppfff, (internal horn amortisation)
- Very high-frequency energy support tweeter with directivity control
- Tightening of HP principal via inert material
- Absolue Créations Tim-Ref internal wiring
- Select filter components from Jantzen, Mundorf, Duelund
- Connector by ETI Eichmann
- 3rd amplifier connector with strong damping factor
- Lacquered finish, colour as desired
- Efficiency: 95 dB/W/m
- Impedance: 8 ohms
- Dimensions: 1062 X 292 X 432 (without base)
- Weight: 46 kg/u
- Made in France

## pandora

So-called CP-SP technical principal ("Charge Pseudo-Symétrique Polarisée")

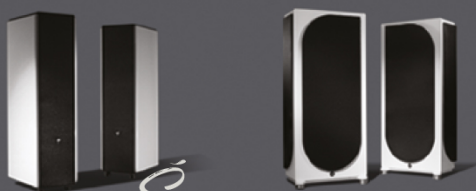
- Composite walls for vibratory mode control
- Mechanical damping via sand-filled structure
- Mechanical asymmetry for dispersion of resonant modes
- Aluminium base as mechanical referent via hard spots
- Diffraction control
- Unfiltered 8" main transducer, electromagnetic driver made in Germany by specifications
- Supporting loudspeakers with neodymium magnet, surface equivalent to 18"
- 2 possible modes of main transducer
- Change of support transducer possible for accommodating models with electromagnetic motor
- External supply with 3 modes (standby, standard, boosted)
- Tightening of HP principal via inert material
- Propping without pressure on magnet
- Absolue Créations Tim-Ref internal wiring
- Select filter components from Jantzen, Mundorf, Duelund
- Connector by ETI Eichmann
- Lacquered finish colour as desired.
- Design optimised for 3 support systems: Neodio Origine B1 or Franc Audio Fat
- Efficiency : 92 dB/W/m
- Impedance : 6 ohms
- Dimensions : 1270 (1310) x 625 (690) x 300 (397) (with base)
- Weight: 62 / 85 kg/u (depending on transducer)
- Made in France



*f r u i t s   d é f e n d u s*

**[www.ppfff.fr](http://www.ppfff.fr)**

email : [listen@ppfff.fr](mailto:listen@ppfff.fr)



*Égérie*  
LIGNE